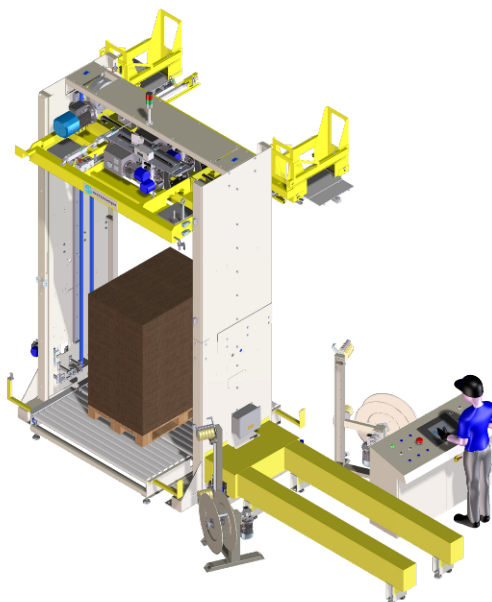


PR2 MFLE / PR2-2L MFLE VERTICAL STRAPPING MACHINE WITH SHEET-INSERTER



Standard PR2 MFLE / PR2-2L MFLE TECHNICAL SPECIFICATIONS

Operation voltage: 400V 3 ph + PE + Neutral upon request

Max. total installed power: 11 KW, possible accessories excluded

Working pressure of compressed air 6 Bar.

The compressed air consumption is about 35 NI for every single strapping cycle.

The bidirectional motorized roller conveyor is adjusted by inverter from 12 to 18 mt/min.

Maximum total weight of the machine and accessories: 3500 Kg. The environmental conditions foresee the operation of the machine with a temperature from 10 to 50 degrees Centigrade and a maximum humidity of 90%.

Strap

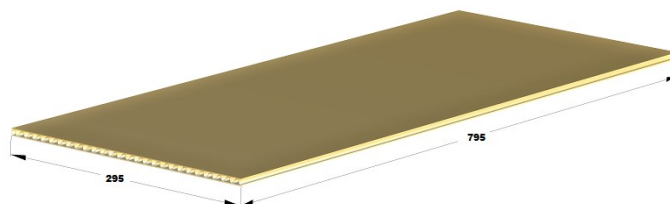
TA10 model strapping head.

Polypropylene (PP) or polyester (PET) strap of 12 or 9 mm, with a thickness from 0,60 to 0,90 mm according to the material.

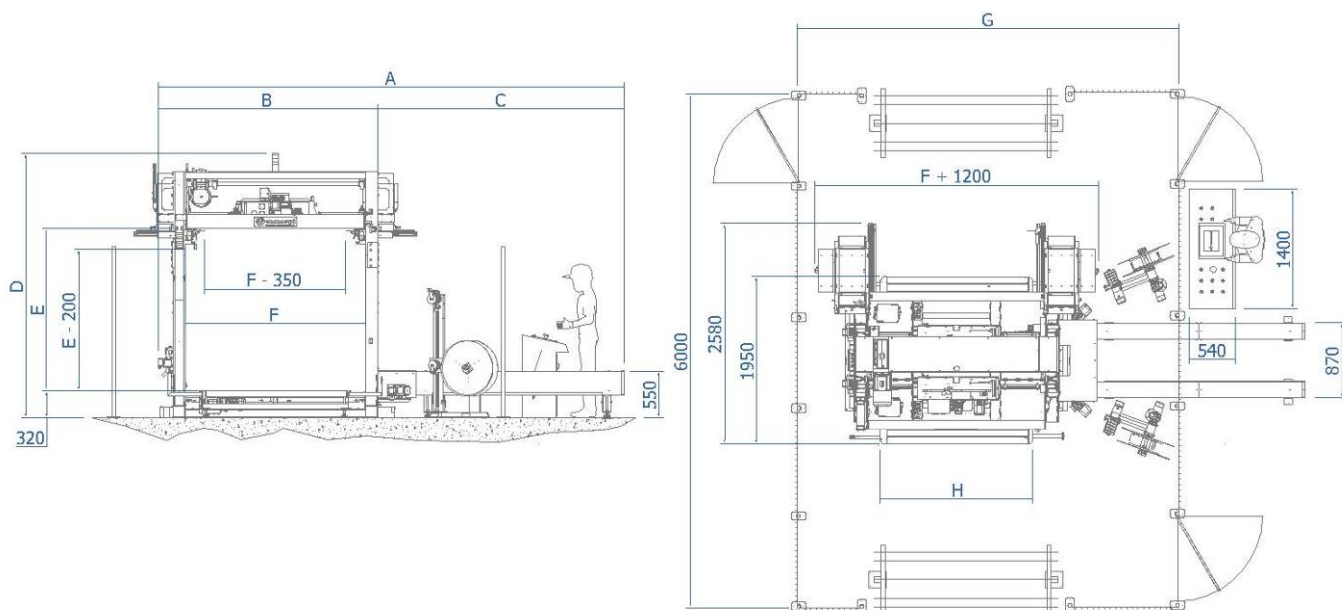
The bobbin has an internal diameter of 395 or 405 mm.

Protection sheet

The 295x795 1 or 2 flutes cardboard sheet must have a thickness between 5 and 7 mm with the orientation of the rods as in the image to the right.



Standard machine sizes

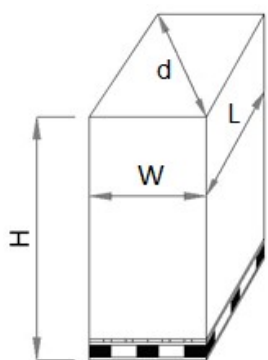


The dimensional drawing refers to the version with lance, decoiler and electric panel on the right, but they can be positioned in both sides. The SIZE table indicates the standard widths of the machine, the MODEL table indicates the heights.

SIZE	A	B	C	F	G	H
2100	5450	2550	2900	2050	4500	1700
2300	5650	2750	3100	2250	4700	1900
2500	5850	2950	3300	2450	4900	2100
2700	6050	3150	3500	2650	5100	2300
2900	6250	3350	3700	2850	5300	2500

MODEL	D	E
PR 219	3080	1900
PR 223	3580	2300
PR 226	3880	2600
PR 230	4280	3000

Sizes of the workable product



The depth (L) of the package is limited to 2000 mm for a better management of transport line, also if theoretically has no limits. The strapping product has the following maximum measures, according to the machine, while all the minimum dimensions are 500 mm. In case of package turning, the maximum diagonal (d) allowed, assume the same value of W max.

SIZE	F	W max
2100	2050	1700
2300	2250	1900
2500	2450	2100
2700	2650	2300
2900	2850	2500

MODEL	E	H max
PR 219	1900	1700
PR 223	2300	2100
PR 226	2600	2400
PR 230	3000	2800