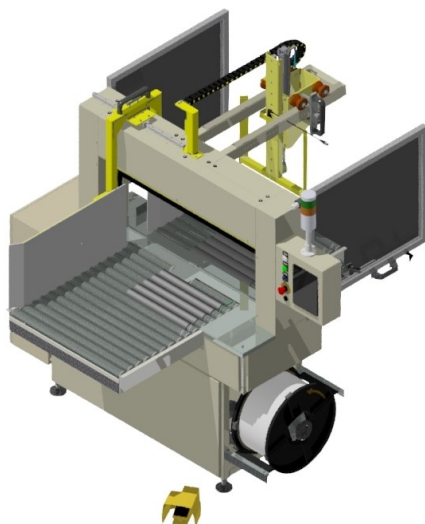


ACT-FPD

STRAPPING MACHINE WITH FRAME FOR FOLDER GLUER



ACTFPD TECHNICAL FEATURES

Standard Operation Voltage: 400V 3 ph + PE with max. installed Power of 1 KW.

Working pressure of compressed air: 6 Bar.

The compressed air consumption is about 7 NI for every single strapping cycle.

The motorized conveyor run at 30 mt/min speed.

Total max. weight of the machine and accessories: 1000 Kg.

The environmental conditions foresee the functioning of the machine at a temperature from 10 to 50 degrees Centigrade and a maximum humidity of 90%.

Strap

TA05 model strapping head. Polypropylene (PP) Strap of 5 mm, with a thickness of 0,40 mm up to the 1450 model, with a thickness of 0,45 from the 1650 width model on. Length of the strap wrapped on the bobbin up to 6500 mt, according to the thickness. The bobbin has an internal diameter of 200 mm.

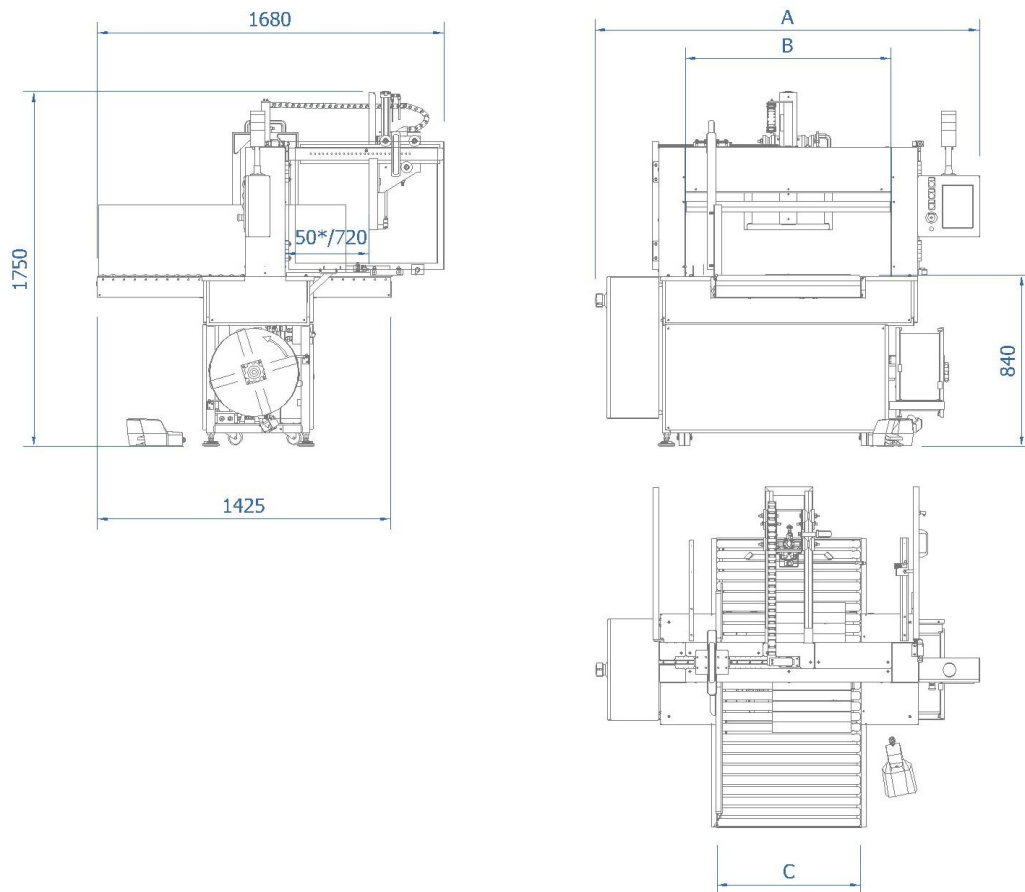
Performances

The number of single strapping per minute ranges from 14 packages for larger models to 20 packages of smaller sizes

Sizes of workable product

The maximum depth of the package is 1500 mm, while the height goes from 50 to 350 mm. The minimum width size of the strapping product is 100 mm, the maximum is 50 mm less than the width of the machine passage (B).

Machine standard sizes



TAGLIA	A	B	C
850	1700	850	600
1000	1850	1000	700
1250	2100	1250	900
1450	2300	1450	1000
1650	2500	1650	1200
1850	2700	1850	1410
2100	2950	2100	1770
2250	3100	2250	1870
2450	3300	2450	1970

The table indicates the standard widths of the passage between the shoulders (B in the machine drawing) and the widths of the machine, while the other dimensions remain unchanged for the various sizes.

* This measure becomes 120 mm if fork stopper is mounted.